

KZNQG Mystery Quilt - designed by Sue Cameron
24 August 2020 - Seventh Instalment

This is the last instalment of the KZNQG Mystery Quilt. I have enjoyed putting it together and have delighted in seeing all the blocks posted on Instagram and Facebook. Thank you for participating in this process with me. It's great to just stitch up a project for the fun of it!

Please do not just print out all the notes. For the quilt assembly, I have done a separate set of notes for each size quilt so you only need to print out the pages that are relevant to you. I even numbered the pages to make this easier!

Mystery Blocks



Cutting:

For a cot size quilt, from your medium fabric, cut six $4\frac{1}{2}$ inch squares.

For a lap quilt, from your medium fabric, cut eight $4\frac{1}{2}$ inch squares.

For a single bed quilt, from your medium fabric, cut seventeen $4\frac{1}{2}$ inch squares.

For a queen size bed quilt, from your medium fabric, cut twenty-four $4\frac{1}{2}$ inch squares.

Method:

1. For each Mystery Block, you will need 4 HST units, 4 Rail Fence units and a $4\frac{1}{2}$ inch medium square. If you are doing a scrap quilt, try to choose a variety of different fabric combinations in each block. Resist the temptation to over-think it!
2. Before you start, make sure that all the units measure exactly $4\frac{1}{2}$ inches.

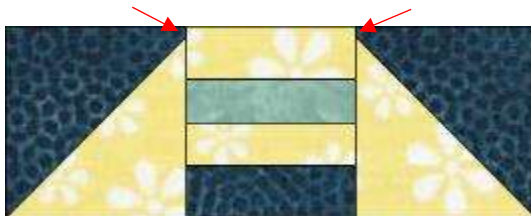
KZNQG Mystery Quilt - designed by Sue Cameron
24 August 2020 - Seventh Instalment

3. For each Mystery block, lay out your blocks in 3 rows of 3 as follows. Notice that the dark stripe in each Rail Fence unit is adjacent to the medium centre square. Also notice the orientation of the HST units.



4. Pin and stitch an HST unit to either side of a Rail Fence unit as in the picture below. Make sure that the space between the triangle points and the edge of the fabric is a quarter inch (see the red arrows below).

Press towards the Rail Fence units.



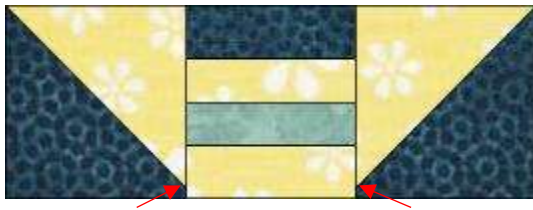
5. Pin and stitch a Rail Fence unit to either side of a medium $4\frac{1}{2}$ inch square as in the picture below. Note the position of the dark strips. Press towards the Rail Fence units.



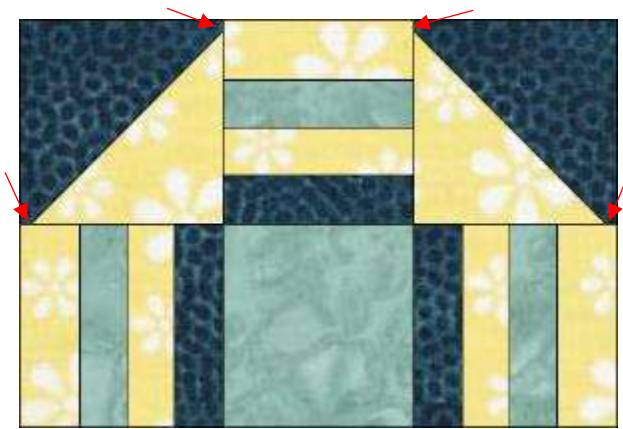
6. Pin and stitch an HST unit to either side of a Rail Fence unit as in the picture below. Make sure that the space between the triangle points and the edge of the fabric is a quarter inch (see the red arrows below).

KZNQG Mystery Quilt - designed by Sue Cameron
24 August 2020 - Seventh Instalment

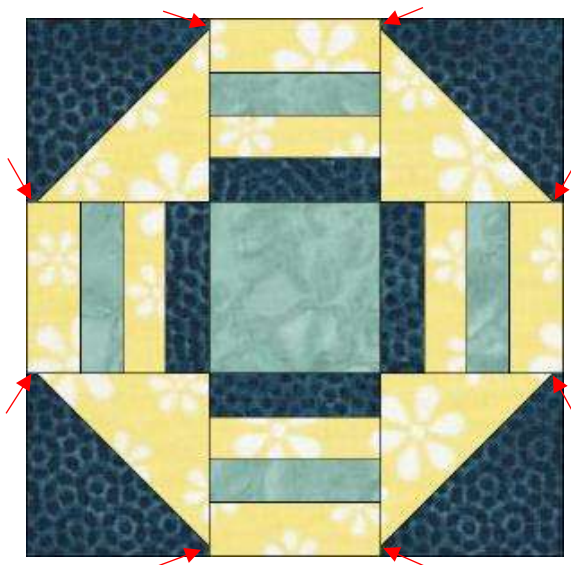
Press towards the Rail Fence units.



7. Pin and stitch the first 2 sets of three together, making sure that you butt your seams perfectly. Make sure that the spaces between the points of the triangles and the edges of the fabric are a quarter inch. See the red arrows below. Press towards the medium square/Rail Fence unit.



8. Pin and stitch the remaining third of the block to the rest of the block, making sure that you butt your seams perfectly. Make sure that the spaces between the points of the triangles and the edges of the fabric are a quarter inch. See the red arrows below. Press towards the medium square/rail fence unit.



KZNQG Mystery Quilt - designed by Sue Cameron
24 August 2020 - Seventh Instalment

9. For a cot size quilt, you will need six Mystery blocks.

For a lap size quilt, you will need eight Mystery blocks.

For a single bed size quilt, you will need seventeen Mystery blocks.

For a queen size quilt, you will need twenty-four Mystery blocks.

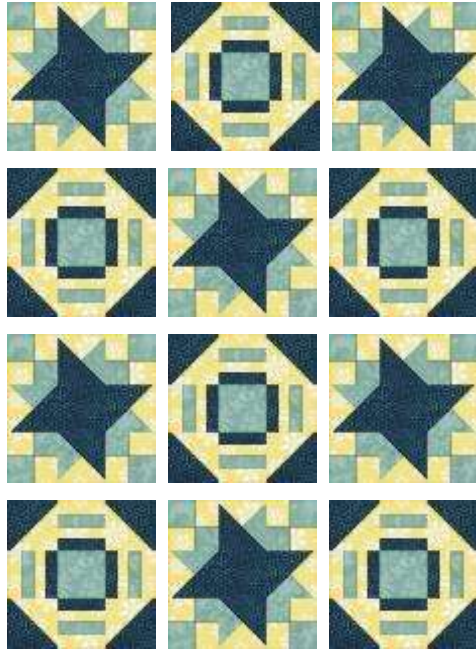
10. Repeat the process with all the Mystery block units.

11. Make sure that all your blocks measure $12\frac{1}{2}$ inches.

KZNQG Mystery Quilt - designed by Sue Cameron
24 August 2020 - Seventh Instalment

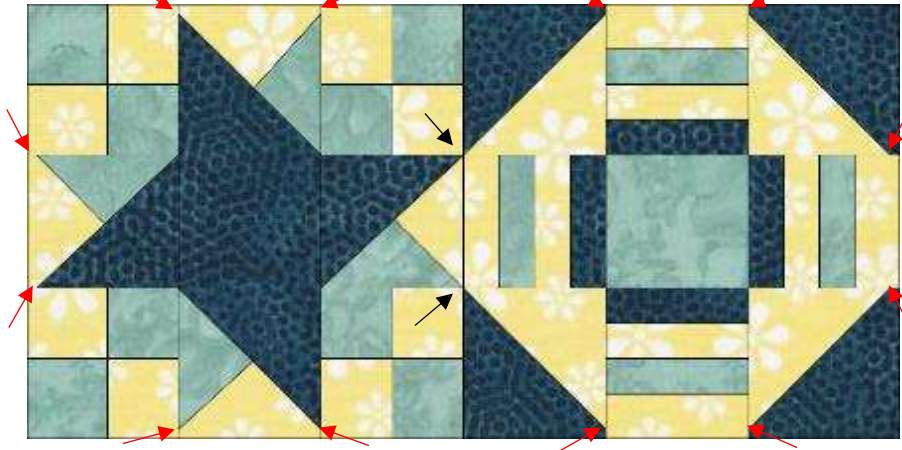
Assembling the Cot Quilt

1. Find a place to work where there is plenty of space to lay out your quilt blocks. Lay the blocks out as in the diagram below.



2. Mark the 1st block in each row from A to D. Do this by pinning a slip of paper with each letter written on it to the centre of each block. Working in rows, pin and stitch the blocks together in two's and then add the last block. Butt the seams carefully as you go making sure that the triangle points meet at the intersections (see the black arrows below). Make sure that the spaces between the triangle points and the edge of the fabric is exactly a quarter inch (see the red arrows below). Press all seams towards the Mystery Blocks. Do each row in order and replace the rows in position as they are completed. Double check to make sure the marked blocks are where they should be.

KZNQG Mystery Quilt - designed by Sue Cameron
24 August 2020 - Seventh Instalment

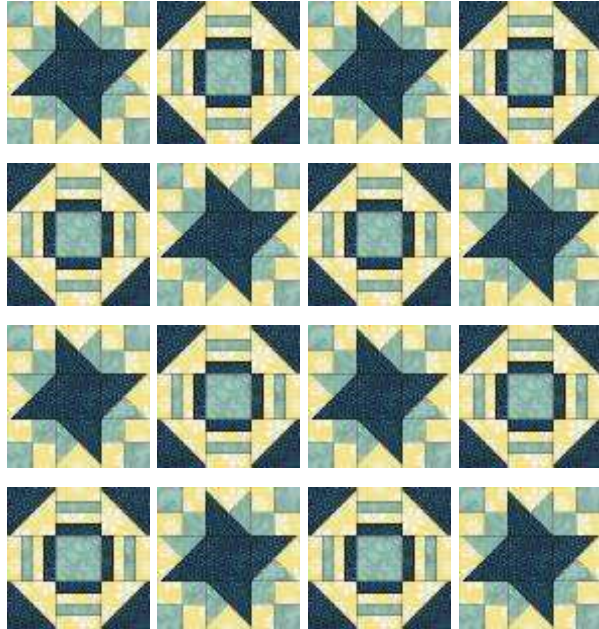


3. Once you have stitched all the blocks in each row together, pin and stitch the rows together in two's, then fours. Make sure all seams are butted and any triangle points meet perfectly.

KZNQG Mystery Quilt - designed by Sue Cameron
24 August 2020 - Seventh Instalment

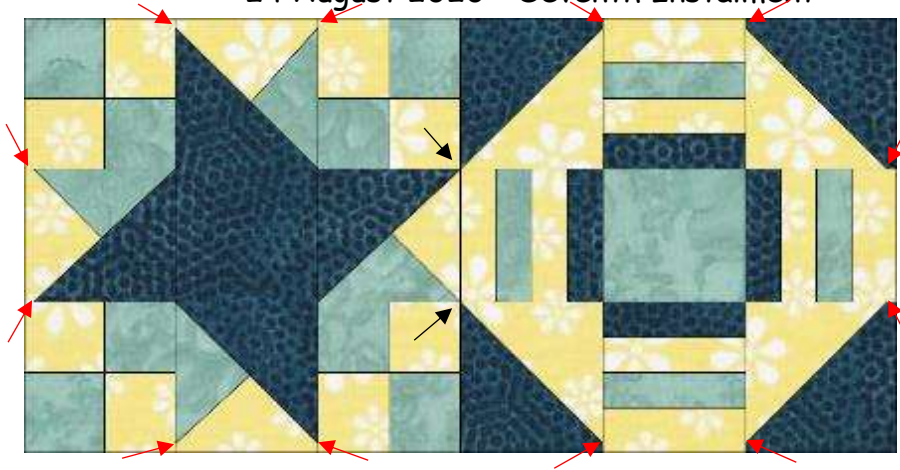
Assembling the Lap Quilt

1. Find a place to work where there is plenty of space to lay out your quilt blocks. Lay the blocks out as in the diagram below.



2. Mark the 1st block in each row from A to D. Do this by pinning a slip of paper with each letter written on it to the centre of each block. Working in rows, pin and stitch the blocks together in two's and then fours. Butt the seams carefully as you go making sure that the triangle points meet at the intersections (see the black arrows below). Make sure that the spaces between the triangle points and the edge of the fabric is exactly a quarter inch (see the red arrows below). Press all seams towards the Mystery Blocks. Do each row in order and replace the rows in position as they are completed. Double check to make sure the marked blocks are where they should be.

KZNQG Mystery Quilt - designed by Sue Cameron
24 August 2020 - Seventh Instalment

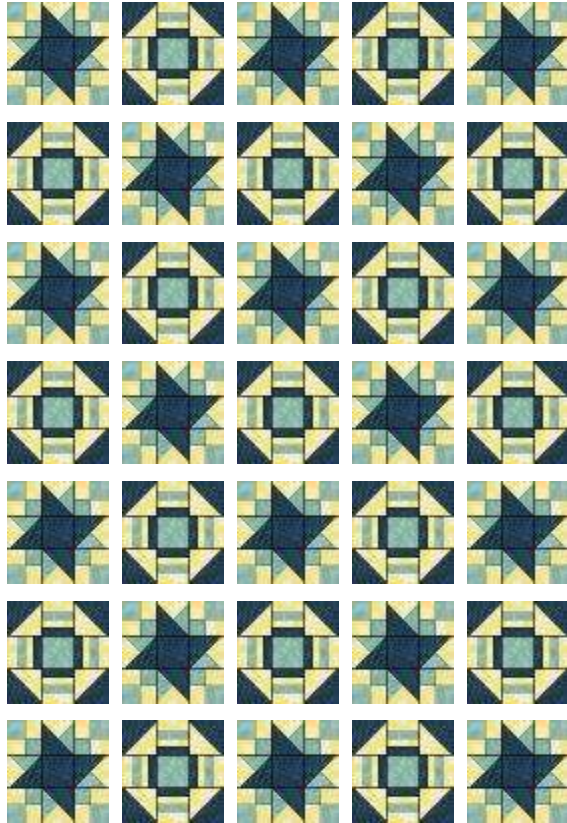


3. Once you have stitched all the blocks in each row together, pin and stitch the rows together in two's, then fours. Make sure all seams are butted and any triangle points meet perfectly.

KZNQG Mystery Quilt - designed by Sue Cameron
24 August 2020 - Seventh Instalment

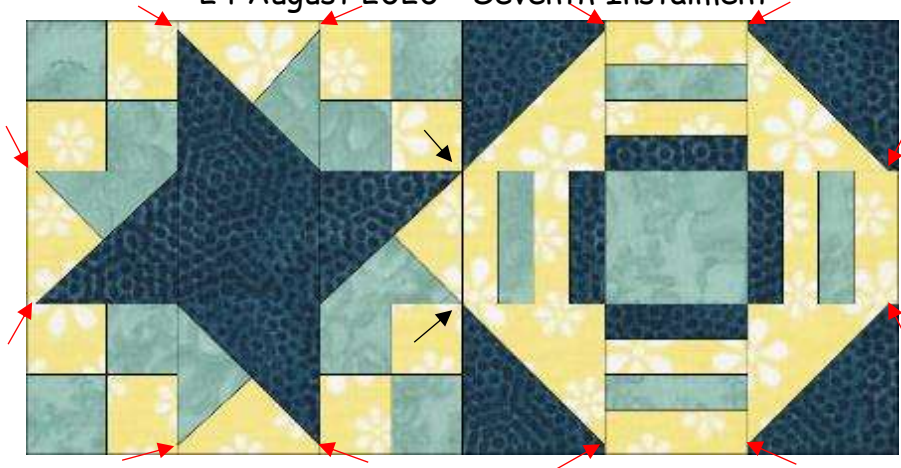
Assembling the Single Bed Quilt

1. Find a place to work where there is plenty of space to lay out your quilt blocks. Lay the blocks out as in the diagram below.



2. Mark the 1st block in each row from A to G. Do this by pinning a slip of paper with each letter written on it to the centre of each block. Working in rows, pin and stitch the blocks together in two's and then four's until all blocks are joined together. Butt the seams carefully as you go making sure that the triangle points meet at the intersections (see the black arrows below). Make sure that the spaces between the triangle points and the edge of the fabric is exactly a quarter inch (see the red arrows below). Press all seams towards the Mystery Blocks. Do each row in order and replace the rows in position as they are completed. Double check to make sure the marked blocks are where they should be.

KZNQG Mystery Quilt - designed by Sue Cameron
24 August 2020 - Seventh Instalment

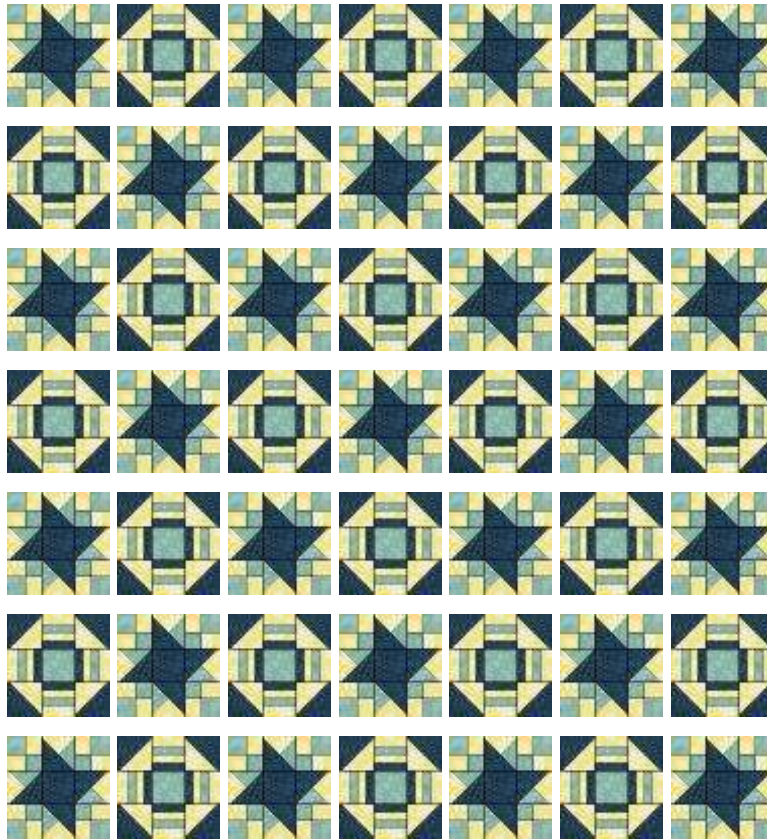


3. Once you have stitched all the blocks in each row together, pin and stitch the rows together in two's, then four's then altogether. Make sure all seams are butted and any triangle points meet perfectly.

KZNQG Mystery Quilt - designed by Sue Cameron
24 August 2020 - Seventh Instalment

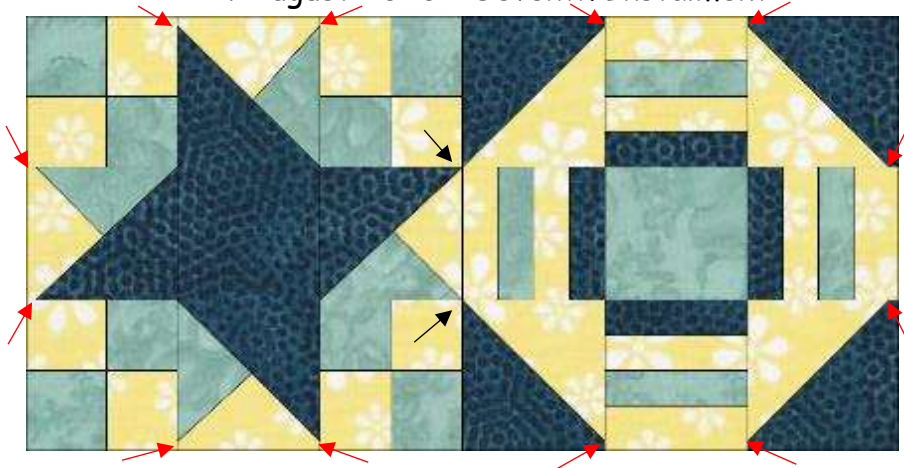
Assembling the Queen Size Bed Quilt

1. Find a place to work where there is plenty of space to lay out your quilt blocks. Lay the blocks out as in the diagram below.



2. Mark the 1st block in each row from A to G. Do this by pinning a slip of paper with each letter written on it to the centre of each block. Working in rows, pin and stitch the blocks together in two's and then four's until all blocks are joined together. Butt the seams carefully as you go making sure that the triangle points meet at the intersections (see the black arrows below). Make sure that the spaces between the triangle points and the edge of the fabric is exactly a quarter inch (see the red arrows below). Press all seams towards the Mystery Blocks. Do each row in order and replace the rows in position as they are completed. Double check to make sure the marked blocks are where they should be.

KZNQG Mystery Quilt - designed by Sue Cameron
24 August 2020 - Seventh Instalment



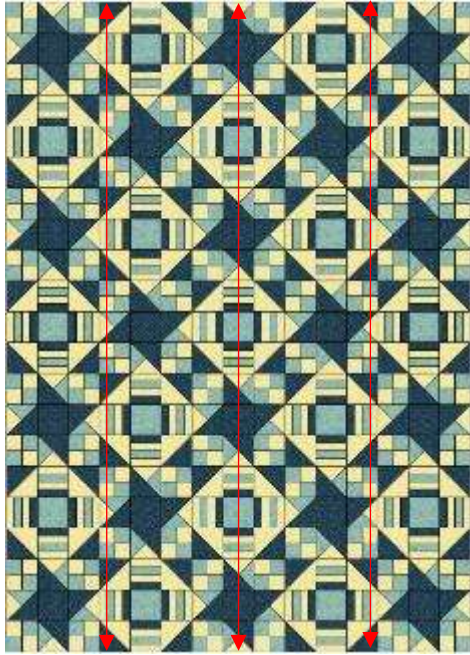
3. Once you have stitched all the blocks in each row together, pin and stitch the rows together in two's, then four's then altogether. Make sure all seams are butted and any triangle points meet perfectly.

KZNQG Mystery Quilt - designed by Sue Cameron
24 August 2020 - Seventh Instalment

Adding Borders

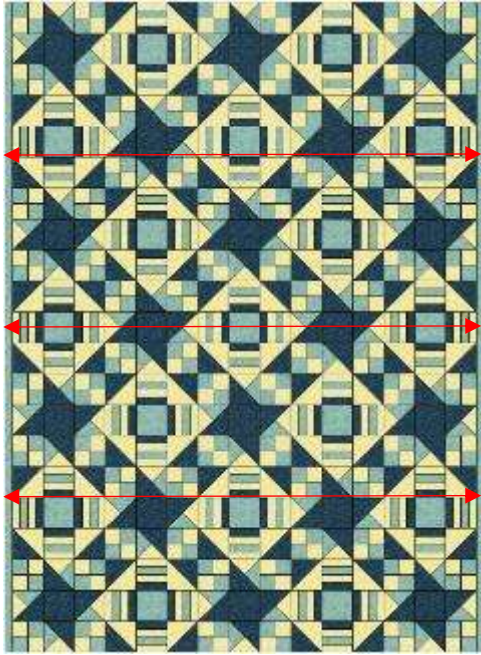
1. Use this method to ensure that your borders fit your quilt top perfectly.
2. Before even beginning with your borders, make sure that your quilt sides are straight and that your triangle points are exactly a quarter inch from the raw edges of the quilt top.
3. There are alternative border options right at the end of these instructions.
4. From the medium fabric, cut your narrow border strips $1\frac{1}{2}$ inches wide.
 - For a cot quilt and a lap quilt, cut 5 strips
 - For a single bed quilt, cut 7 strips
 - For a queen size quilt, cut 9 strips
5. You will need to join strips together to make them long enough.
 - When joining border strips, join them on the straight and not on the diagonal. Diagonal seams are less stable than straight seams.
 - Make sure that you trim the selvages off before you begin.
 - For the cot and lap quilts, use only the fifth strip to extend all the others. This way there will be fewer joins.
 - When joining your border strips, make the seam allowance a little larger than a quarter inch and iron the seams open. This will make your joining seams less noticeable.
6. To work out the length of your border strips, follow the instructions below:
 - NEVER, NEVER, NEVER just place a border strip along the raw edge of the quilt and sew without measuring and pinning the borders on first. If you do, you will end up with your borders being either too tight which will make your quilt centre balloon OR your borders will be too long for your quilt and it will end up with a wavy edge, like a lettuce leaf!!!! Sad but true! Successful borders require a bit more work than that!
 - The correct way to add your borders, is to measure, pin and stitch.
 - First measure your quilt 3 times along the length, down the middle, then a quarter of the way across and then three quarters of the way across (see the arrows on the picture below). Never measure the edges of the quilt. Record these measurements.
7. Add the 3 measurements together and divide the total by 3 to get the average length of your quilt.

KZNQG Mystery Quilt - designed by Sue Cameron
24 August 2020 - Seventh Instalment



8. Cut two narrow borders to this measurement. Before you add the borders find the centre of each side of the quilt top and mark with a pin. Do the same with the border strips.
9. Working on a large flat surface, pin the two ends of the border on first then the centre. Then pin at a quarter, then at three quarters of the way along, then pin in between those pins and so on until you have pinned the border in its entirety. There should be a pin at least every 3 inches. Stitch your narrow borders onto the quilt top. Press towards the borders.
10. Now measure the quilt from side to side (including the new borders). Again, measure 3 times, add the measurements together and divide the total by 3. Cut your borders to this length. Pin and stitch as before.

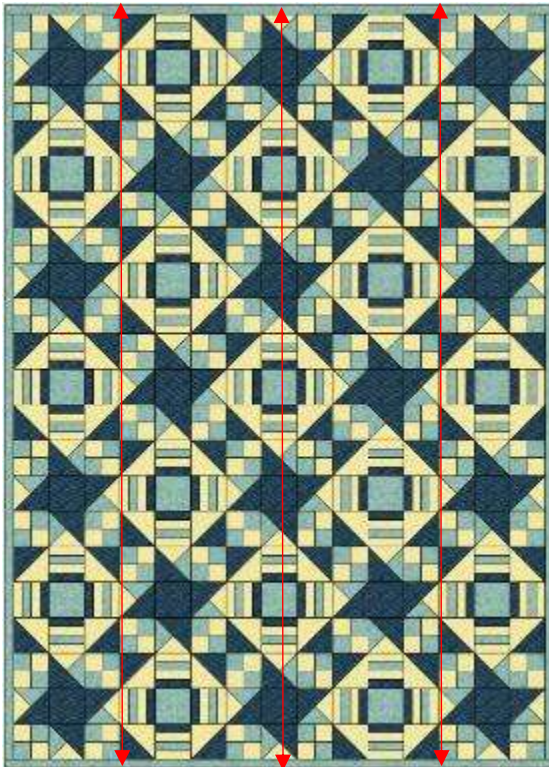
KZNQG Mystery Quilt - designed by Sue Cameron
24 August 2020 - Seventh Instalment



11. Cut your wide border strips $4\frac{1}{2}$ inches:

- For a cot quilt, cut 6 strips
- For a lap quilt, cut 6 strips
- For a single bed quilt, cut 8 strips
- For a queen size quilt, cut 10 strips

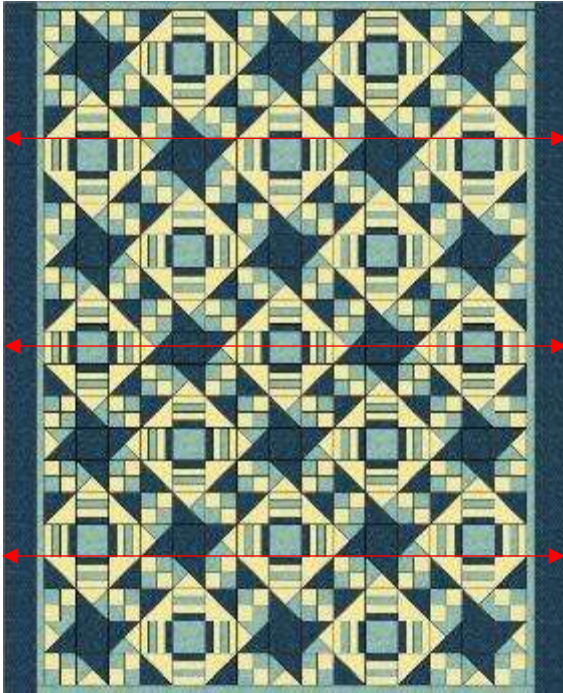
12. Measure the length of the quilt 3 times along the length as before.



13. Measure, cut, pin and stitch borders as before.

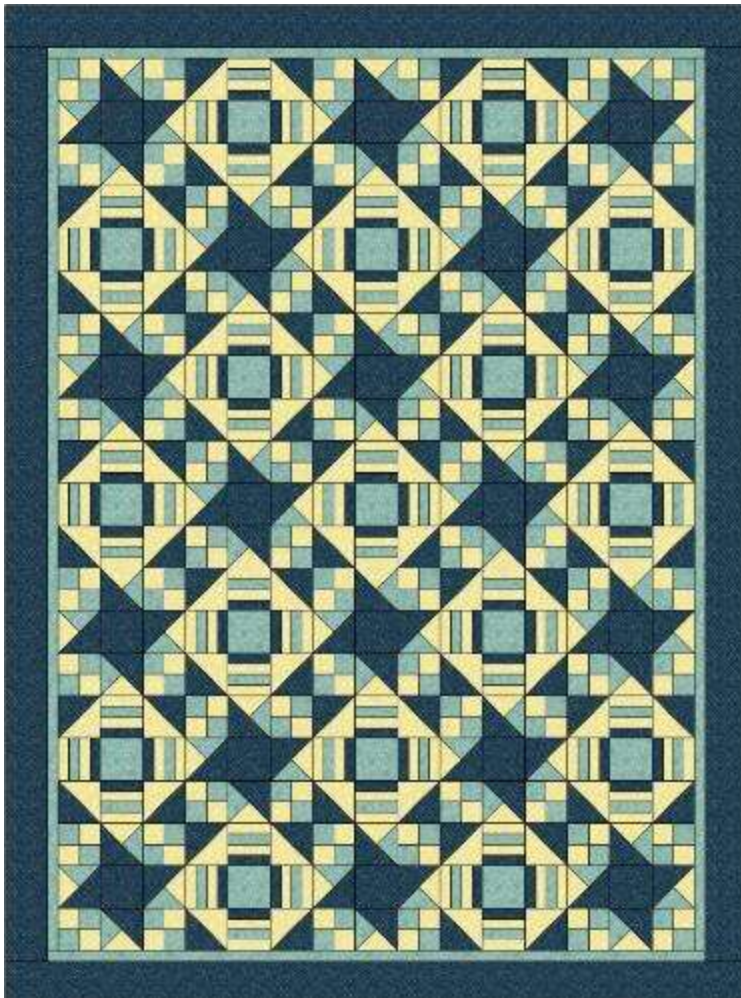
KZNQG Mystery Quilt - designed by Sue Cameron
24 August 2020 - Seventh Instalment

14. Measure from side to side 3 times as before.



15. Measure, cut, pin and stitch borders as before.

16. Your quilt should look as follows.



KZNQG Mystery Quilt - designed by Sue Cameron
24 August 2020 - Seventh Instalment



This quilt has the rail fence quilt blocks as the borders. Follow the instructions in instalment 4 to make these blocks. For this quilt, you will need to put a 2 inch border as your first border. Cut it $2\frac{1}{2}$ inches. I used a dark fabric for this one. It's a simple alternative border that still speaks to the quilt centre.

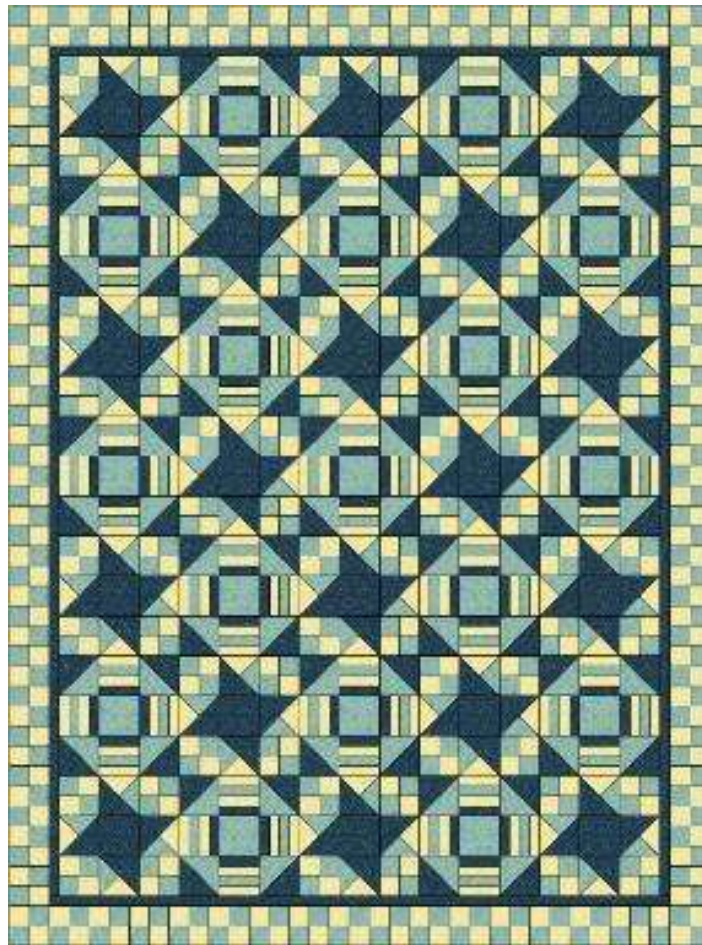
For the cot quilt, you will need 46 rail fence blocks the same as the instructions. You will need four $4\frac{1}{2}$ inch medium squares for the corner blocks.

For the lap quilt, you will need 52 rail fence blocks the same as the instructions. You will need four $4\frac{1}{2}$ inch medium squares for the corner blocks.

For the single bed quilt, you will need 76 rail fence blocks the same as the instructions. You will need four $4\frac{1}{2}$ inch medium squares for the corner blocks.

For the queen size quilt, you will need 88 rail fence blocks the same as the instructions. You will need four $4\frac{1}{2}$ medium squares for the corner blocks.

KZNQG Mystery Quilt - designed by Sue Cameron
24 August 2020 - Seventh Instalment



This quilt has the 4-patch blocks as the borders. Follow the instructions in instalment 2 to make these blocks. For this quilt, you will need to put a 1 inch border as your first border. Cut it $1\frac{1}{2}$ inches. I used a dark fabric for this one. The 4-patch makes a simple alternative border that still speaks to the quilt centre. The following quantities are for the following units.



For a cot quilt, you will need 96 units.

For a lap quilt, you will need 108 units

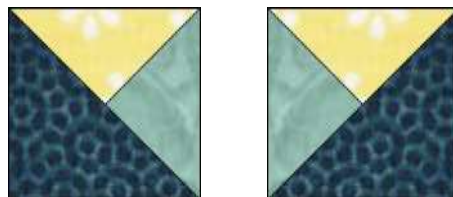
For a single bed quilt, you will need 156 units.

For a queen size quilt, you will need 180 units.

KZNQG Mystery Quilt - designed by Sue Cameron
24 August 2020 - Seventh Instalment



This quilt has the Y-blocks as the border. Follow the instructions in instalment 5 to make these blocks. For this quilt, you will need to put a 2 inch border as your first border. Cut it $2\frac{1}{2}$ inches. I used a dark fabric for this one. The Y-block border is a simple alternative border that still speaks to the quilt centre. Notice that half the blocks are a mirror image of the blocks you made in instalment 5.



The corner blocks are the same as the HST blocks you made in Instalment 3.

KZNQG Mystery Quilt - designed by Sue Cameron
24 August 2020 - Seventh Instalment

For the cot quilt, you will need 23 Y-blocks the same as the instructions and 23 as the mirror image. You will need 4 HST units for the corner blocks.

For the lap quilt, you will need 26 Y-blocks the same as the instructions and 26 as the mirror image. You will need 4 HST units for the corner blocks.

For the single bed quilt, you will need 38 Y-blocks the same as the instructions and 38 as the mirror image. You will need 4 HST units for the corner blocks.

For the queen size quilt, you will need 44 Y-blocks the same as the instructions and 44 as the mirror image. You will need 4 HST units for the corner blocks.